

B.Tech 2nd Semester Exam., 2019

(New Course)

CHEMISTRY

Time : 3 hours

Full Marks : 70

Instructions :

- (i) The marks are indicated in the right-hand margin.
- (ii) There are **NINE** questions in this paper.
- (iii) Attempt **FIVE** questions in all.
- (iv) Question No. 1 is compulsory.

1. Answer any seven questions in brief : 2×7=14

- (a) State de Broglie's principle.
- (b) What is an orbital?
- (c) What are the shapes of BF₃ and ClF₃ molecules?
- (d) Which one of NH₃, PH₃, AsH₃ and SbH₃ possesses the largest bond angle? Give reason.

(2)

(e) Out of Cr²⁺ and Cr³⁺, which one is stable in aqueous solution?

(f) Cu⁺ is colourless, but Cu²⁺ is coloured. Why?

(g) What is selection rule?

(h) A gas expands against vacuum. What is the work done on it?

(i) What is the condition for a reaction to be in equilibrium?

(j) The presence of CO₂ in boiler-fed water should be avoided. Why?

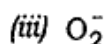
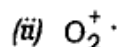
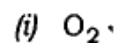
2. (a) Write short notes on the following : 5

- (i) Wave-particle duality
- (ii) Heisenberg's uncertainty principle

(b) Discuss photoelectric effect (with mathematical equation) for explaining the particle nature of light. 5

(c) How many photons of light having a wavelength of 4000 Å are necessary to provide 1J of energy? (h = 6.626 × 10⁻³⁴ Js) 4

3 (a) Which of the following two molecules has a higher bond length?



Explain using molecular-orbital theory. 6

(b) Draw the MO energy-level diagram for NO molecule. Using this diagram, calculate and explain bond orders and magnetic behaviours of (i) NO, (ii) NO⁺ and (iii) NO⁻. 8

4 (a) The internuclear distance of NaCl is 2.36 × 10⁻¹⁰ m. Calculate the reduced mass and moment of inertia of NaCl (atomic mass of Cl = 35 × 10⁻³ kg mol⁻¹ and Na = 23 × 10⁻³ kg mol⁻¹). 4

(b) Calculate the force constant for CO, if it absorbs at 2.143 × 10⁵ m⁻¹ (atomic mass of C = 12 × 10⁻³ kg mol⁻¹ and O = 16 × 10⁻³ kg mol⁻¹).

(c) Define chromophore and auxochrome with examples. 4

(d) Which type of electronic transition(s) is/are observed in UV-visible spectrum of propanone in the range 200 nm to 900 nm? Justify your answer. 2

5. (a) How many types of ¹H NMR signals are expected for (i) CH₃CH₂OH and (ii) CH₃OCH₃? Mention relative intensity ratio for the signal(s) observed for (i) and (ii). 4

(b) At what frequency shift from TMS, would a group of nuclei with δ = 1.5 resonate in NMR spectrometers operating at 60 MHz and 400 MHz? 4

(c) 2 mol of NH₃ at 300 K occupy a volume of 5 × 10⁻³ m³. Calculate the pressure using van der Waals equation.

(a = 0.417 Nm⁴ mol⁻²)

and b = 0.037 × 10⁻³ m³ mol⁻¹)

Compare the above result with the pressure calculated using ideal gas equation. 6

http://www.akubihar.com

http://www.akubihar.com

http://www.akubihar.com

http://www.akubihar.com

6 (a) 7 mol of a monatomic ideal gas are compressed reversibly and adiabatically. The initial volume is 15 dm^3 and the final volume is 9 dm^3 . The initial temperature is 27°C .

(i) What would be the final temperature in this process? ✓

(ii) Calculate w , q and ΔU for the process. <http://www.akubihar.com>

Given $C_v = 20.91 \text{ JK}^{-1} \text{ mol}^{-1}$, $\gamma = 1.4$.

7

(b) Write a cell (in proper cell representation) whose cell reaction is $\text{AgCl} \rightarrow \text{Ag}^+ + \text{Cl}^-$ using the following standard electrode potentials at 298 K .

$$E^\circ_{\text{AgCl}/\text{Ag}|\text{Cl}^-} = 0.22 \text{ V}, E^\circ_{\text{Ag}^+/\text{Ag}} = 0.80 \text{ V}.$$

Calculate E° of the cell. Calculate solubility product (or solubility constant) of AgCl and its solubility at 298 K .

7

7. (a) A water sample had the following constituents per litre :

$\text{CaCO}_3 = 81 \text{ mg}$, $\text{Mg}(\text{HCO}_3)_2 = 75 \text{ mg}$
 $\text{CaSO}_4 = 136 \text{ mg}$, $\text{MgSO}_4 = 120 \text{ mg}$,
 $\text{NaCl} = 4.7 \text{ mg}$. Calculate the quantities of temporary and permanent hardness in the water sample

Calculate the quantity of lime (78% purity) and soda (92% purity) required for softening of 1.5 million litre of above water sample.

7

(b) In an experiment to determine the hardness of a sample of water, 25 mL of $N/50 \text{ Na}_2\text{CO}_3$ solution was added to 100 mL of water sample. After complete precipitation of insoluble carbonate, the unreacted Na_2CO_3 was titrated against $N/50 \text{ H}_2\text{SO}_4$ solution, when 10 mL of acid was required. Calculate the hardness and comment on the nature of hardness so determined.

3

(c) Discuss the advantages and limitations for the removal of hardness by zeolite method.

4

8. (a) Write notes on the following :

7

(i) Optical isomerism of lactic acid

(ii) Optical isomerism of tartaric acid

(b) Differentiate between the following :

7

(i) Enantiomers and diastereomers

(ii) Racemic mixture and meso-compounds

9. (a) Explain the following :

6

(i) Trichloroacetic acid is stronger acid than acetic acid.

(ii) The amino group in aniline is *o*- and *p*-directing but amide group is *meta*-directing.

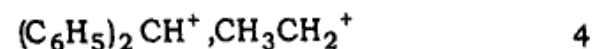
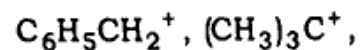
http://www.akubihar.com

http://www.akubihar.com

http://www.akubihar.com

http://www.akubihar.com

(b) Arrange the following carbocations in order of increasing stability with suitable reasons :



(c) Write short notes on the following : 4

(i) Markownikoff's rule

(ii) Kharasch's rule

http://www.akubihar.com

Whatsapp @ 9300930012

Your old paper & get 10/-

पुराने पेपर्स भेजे और 10 रुपये पायें,

Paytm or Google Pay से

Code : 100203

AK9—5220/684